

ELVO - PIR v1.0



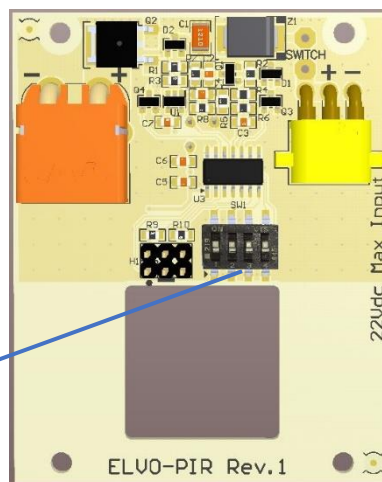
The ELVO-PIR is a movement sensor switch.

- Senses body movement over a 6 metre range
 - 3 metres range at 90° (walking direct to sensor)
 - +/- 6 metres walking across the face of the sensor (180°)
- Configurable 'light on' time
- Configurable modes:
 - Light usually off, lit during movement trigger (default)
 - Light always on during sunshine, off at night until movement trigger. Good for workshop situations.
 - Always on (for testing – emulates a standard on/ off switch)

On default the ELVO-PIR will be off during no movement timeout (night or day) and come on for 15 minutes for each movement (it will retrigger so long as someone keeps moving).

The mechanical switch turns off all power to the circuitry so it can usually be left in the 'ON' position.

If you want to change the settings, use a fine flat blade screwdriver or similar to change the switch positions

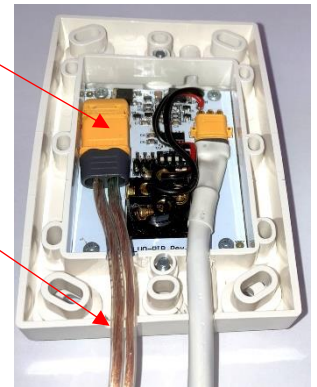
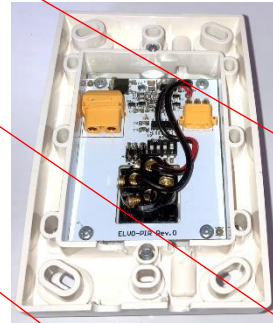


	 00	 01	 10	 11
	15 minutes (default)	60 minutes	1 minute	3 seconds (test)
Output On During the Day when slid to "ON"				
Output Always "ON" – used for testing				

Note: The output will turn off and the unit will go into extreme low power standby mode when the input voltage drops below 11 Volts DC

Installation:

1. Remove the cover
2. Remove the mounting screws
3. Turn over and plug in both connectors – note the plug polarizing
4. Place the ELVO-PIR against the wall, making sure the cables pass through the gaps provided for surface mount
5. Screw ELVO-PIR to the wall
6. Replace the cover
7. Installation is complete



Specifications:

Input Voltage:	11 – 22 Volts DC
Output:	Input Voltage @ 6A max
Quiescent Current:	14uA (input voltage dependent)
Protection:	1500W @ 10/1000uS transient dissipation
Weight:	
Ambient temperature	50°C max